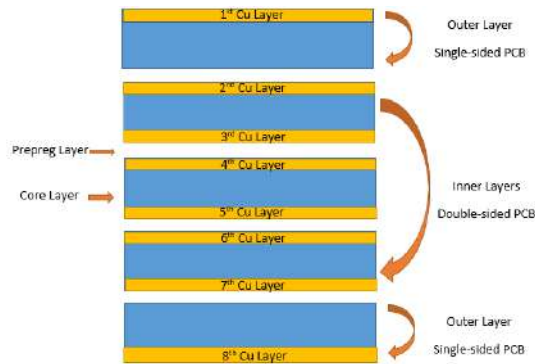


November 8, 2021

Dear Valued Customers:

Introducing NEW: **Conventional PCB—Multi-layer PCB**

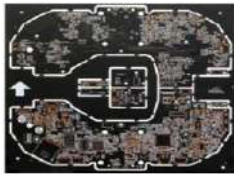


The structure of 8-layer PCB

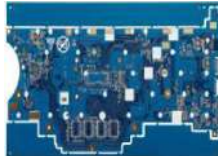
- The multi-layer PCB is composed of more than 2 conductive layers, two of which are on the outer surfaces and the remaining layers are integrated into insulating layers.
- The number of layers in the PCB represents the number of independent conductive copper layers.
- Technology and price advantage on boards up to 32 layers.

Applications of multi-layer PCB

- Telecommunication
- Automotive electronics
- Industrial automation
- Medical electronics
- Power control & security
- Consumer electronics
- High-tech products



Sweeping Robot (6-layer)



Tablet (10-layer)



Communication(12-layer)

Please contact us (info@orientdisplay.com) for further information or visit [our website](#).

Orient Display Team