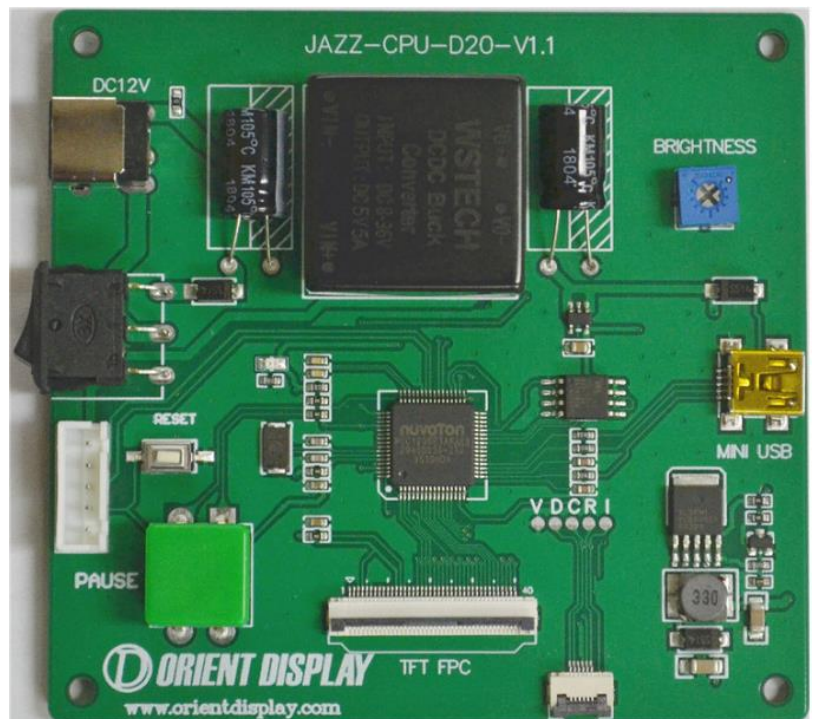


# **ORIENT DISPLAY** Your Total LCD Solution Provider

## JAZZ-CPU-D20 Tester User Manual



\*Picture-1: Picture of JAZZ-CPU-D20

## 1. General Description

This demo board (JAZZ-CPU-D20) is used to test Orient Display standard product 2.4"/2.8" IPS TFT series.

Testable part numbers are shown in below Table-1.

Size	TFT	TFT with RTP	TFT with CTP
2.4"	AFY240320A1-2.4INTH	AFY240320A1-2.4INTH-R	AFY240320A1-2.4INTH-C
2.8"	AFY240320A1-2.8INTH	AFY240320A1-2.8INTH-R	AFY240320A1-2.8INTH-C

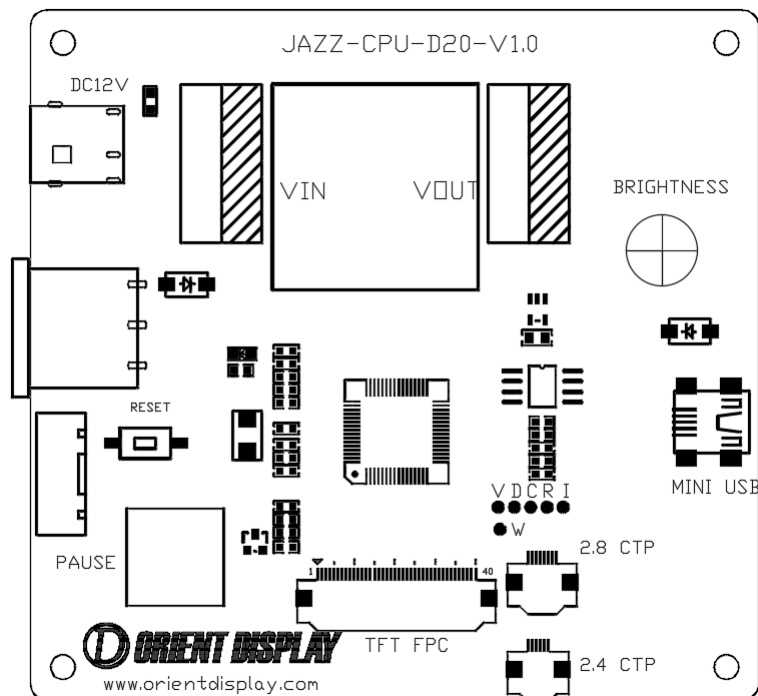
Table-1

## 2. Product Description

This tester is a comprehensive product used to test Orient Display standard IPS TFT with MCU interface. Customer can test different sizes and mode by changing the files in Flash memory of this tester.

Dimension: 90\*85\*15mm common voltage ripple < 20mV. Please put tester and TFT module at a flat surface.

Please refer to below Graphic-1 for connection figure.



Graphic-1

- **POWER**: the DC12/1A power adaptor is offered with the tester, and support AC110V ~240V power supply.
- **ON/OFF power switch**: power on and power off controller.

- PAUSE: when the pressure PAUSE button, the scrolling pictures will be paused.
- RESET: to reset the system of tester.
- BRIGHTNESS: adjust the brightness of the display

Kindly note that when power on, the display is at the highest brightness setting by default. At this time the backlight brightness is not limited by the position of the backlight potentiometer.

To adjust the backlight brightness, turn the potentiometer counter clockwise all the way. Then adjust the brightness by turning it clockwise slowly, the brightness will gradually decrease as you turn the potentiometer.

When the backlight is at the lowest brightness, please turn the potentiometer counter clockwise to increase brightness.

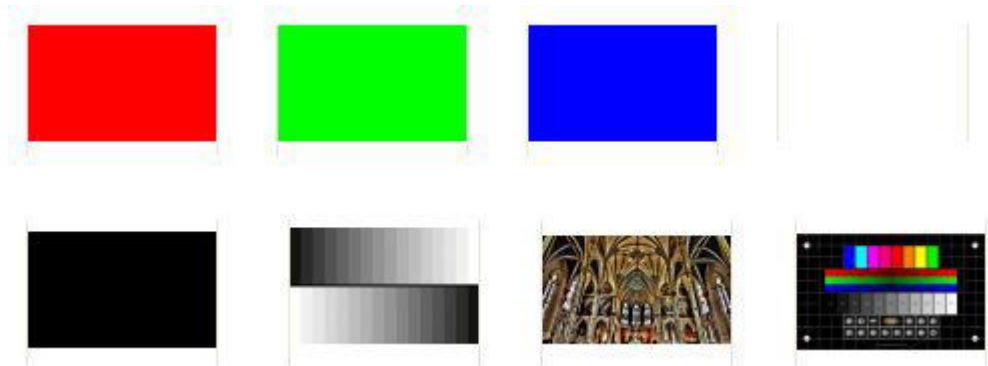
### 3. Testing Procedures

a) Preparations are as follows:

- Copy software file related to the display part number to Flash memory of this tester.
- Connect the FPC of display in the tester board.
- Plug the power adaptor.

b) Power on the tester.

c) Below pictures as shown in Graphic-2 will start to auto display with one second interval.



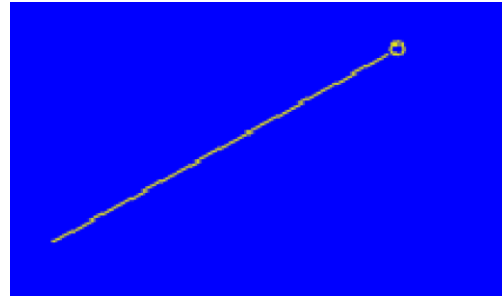
d) Resistive Touch Panel testing

- Press PAUSE button anytime to pause auto display, and start the touch panel test mode.

- When user touches the screen, there will appear a small yellow circle at the touched position. (Please refer to Graphic-3).
- If user moves finger on the resistive touch screen, the display screen will show a yellow line starting with the yellow circle. (Please refer to Graphic-4).



Graphic-3

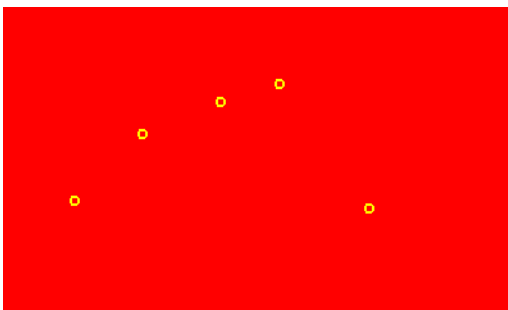


Graphic-4

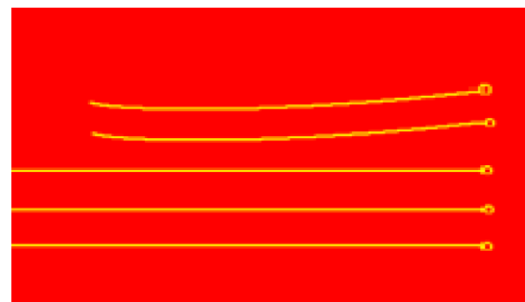
#### e) Capacitive Touch Panel testing

Support simultaneous touch within 5 points.

- Press PAUSE button anytime to pause the auto-display, and start the touch panel test mode.
- When user touches the screen by finger, a small yellow circle will appear at the touched position. If user touches 5-point on screen at the same time, there are 5 yellow circles will appear. Please refer to Graphic-5.
- If user moves fingers on the capacitive touch screen, the display screen will show five yellow lines starting with the yellow circles. (Please refer to Graphic-6).



Graphic-5



Graphic-6

Support CTP features that can be tested simultaneously within 5 points

#### f) After testing

Turn off the power, and unplug the adaptor.