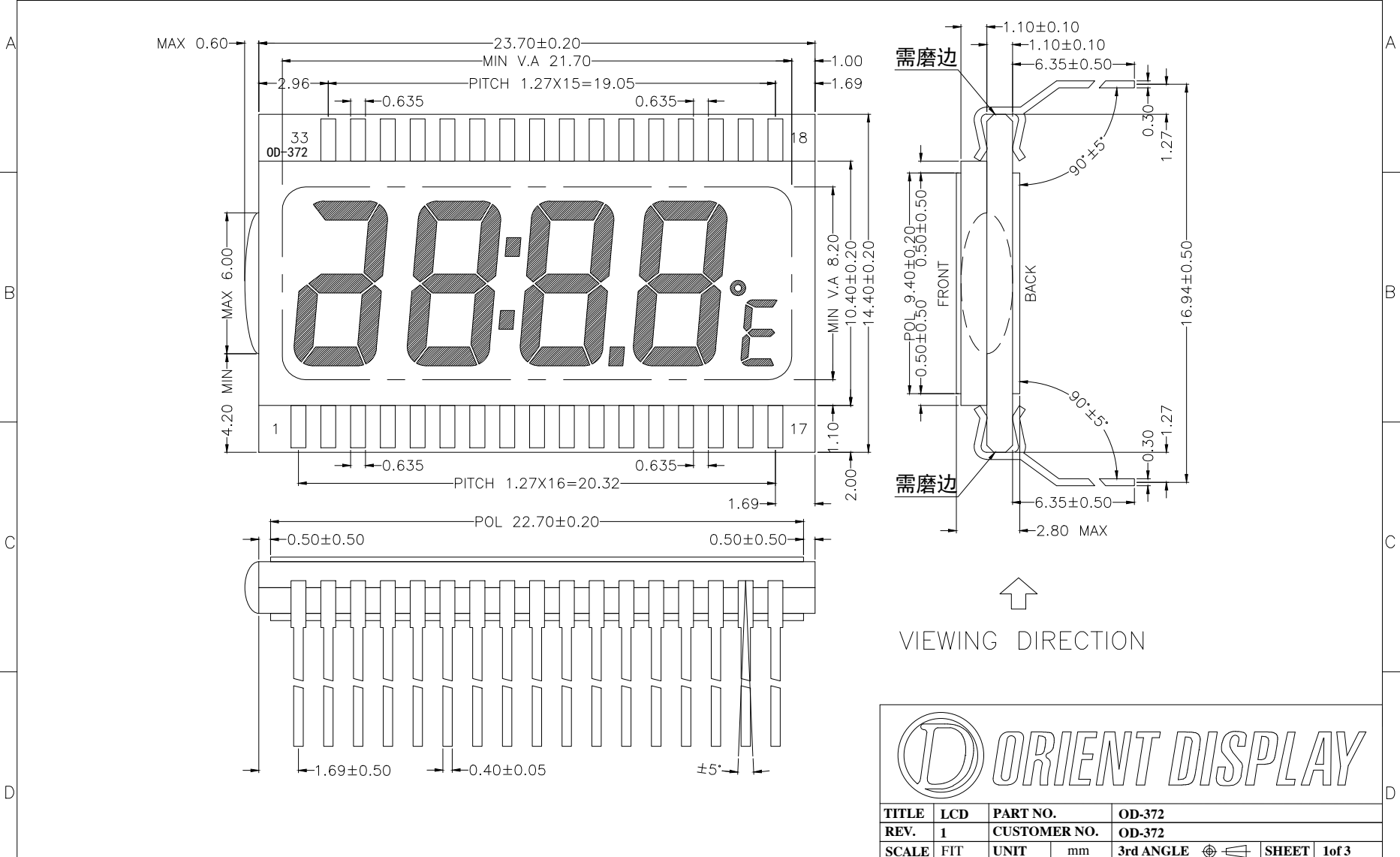


THIS DRAWING IS PROPERTY OF ORIENT DISPLAY. ALL RIGHTS RESERVED.

ITEM	PARAMETERS	ITEM	PARAMETERS	ITEM	PARAMETERS	ITEM	PARAMETERS
DISPLAY TYPE	TN, POSITIVE	VIEWING DIRECTION	6.0° CLOCK	LCD OPERATING VOLTAGE	5.0V	IC	--
DRIVING METHOD	STATIC	OPERATION TEMPERATURE	-20°C TO 70°C	LOGIC VOLTAGE(VDD)	--	BACKLIGHT	/
POLARIZER TYPE	REFLECTIVE	STORAGE TEMPERATURE	-30°C TO 80°C	SURFACE LUMINANCE	--	CONNECTOR	PIN

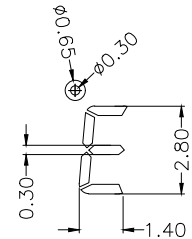
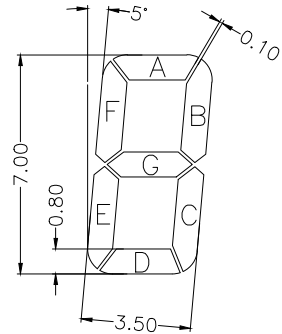
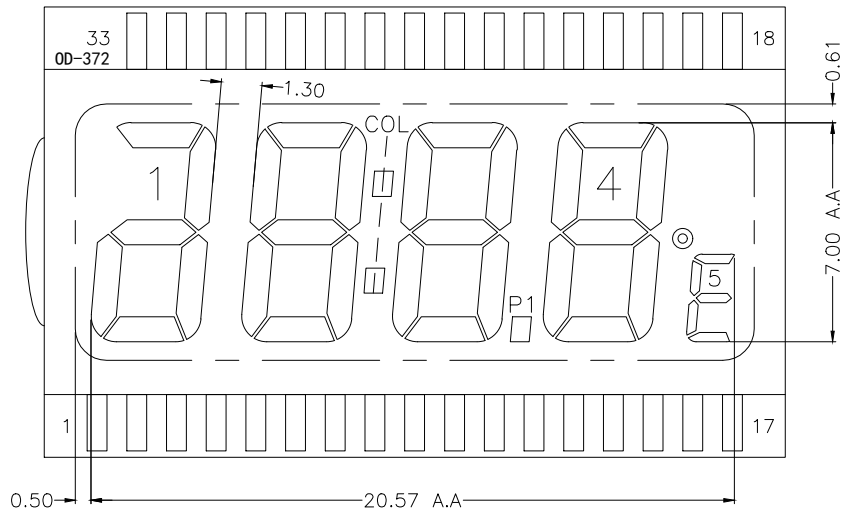


TITLE	LCD	PART NO.	OD-372
REV.	1	CUSTOMER NO.	OD-372
SCALE	FIT	UNIT	mm
ROHS/REACH COMPLIANT	YES	CUSTOMER'S APPROVAL	
UNMARKED TOLERANCE	±0.2		

01	改玻璃厚度	February-15	
REV.	SYMBOL DESCRIPTION	DATE	

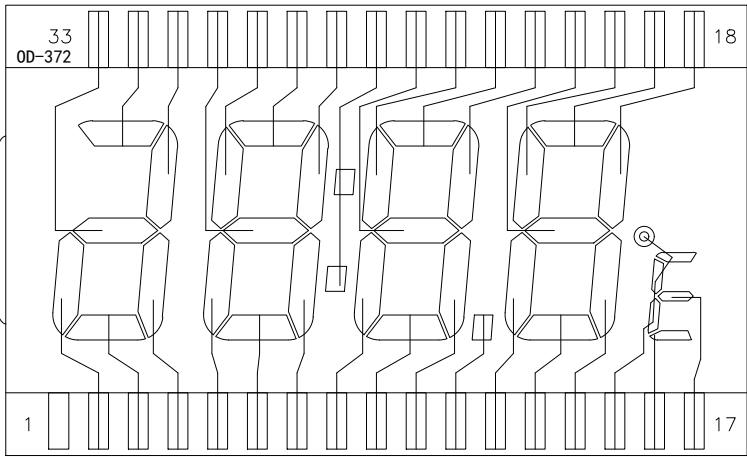
PIN	1	2	3	4	5	6	7	8	9	10	11	12	13	14	15	16	17
COM	COM	1E	1D	1C	2E	2D	2C	3E	3D	3C	P1	4E	4D	4C	⊙5AEF	5D	5G

PIN	18	19	20	21	22	23	24	25	26	27	28	29	30	31	32	33
COM	4B	4A	4F	4G	3B	3A	3F	3G	COL	2B	2A	2F	2G	1B	1A	1G

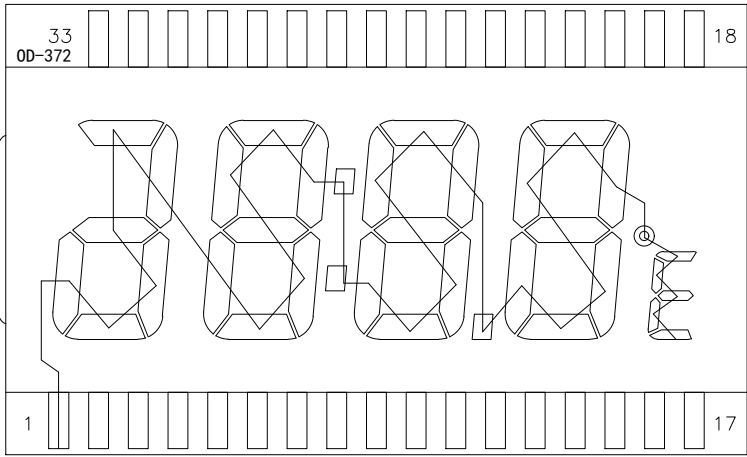


TITLE	LCD	PART NO.	OD-372
REV.	1	CUSTOMER NO.	OD-372
SCALE	FIT	UNIT	mm
ROHS/REACH COMPLIANT	YES	3rd ANGLE	⊕
UNMARKED TOLERANCE	±0.2	CUSTOMER'S APPROVAL	

SHEET 2 of 3

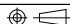


SEG



COM



TITLE	LCD	PART NO.	OD-372
REV.	1	CUSTOMER NO.	OD-372
SCALE	FIT	UNIT	mm
ROHS/REACH COMPLIANT	YES	3rd ANGLE	 SHEET 3of 3
UNMARKED TOLERANCE	±0.2	CUSTOMER'S APPROVAL	