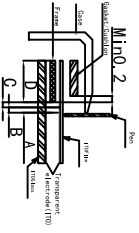
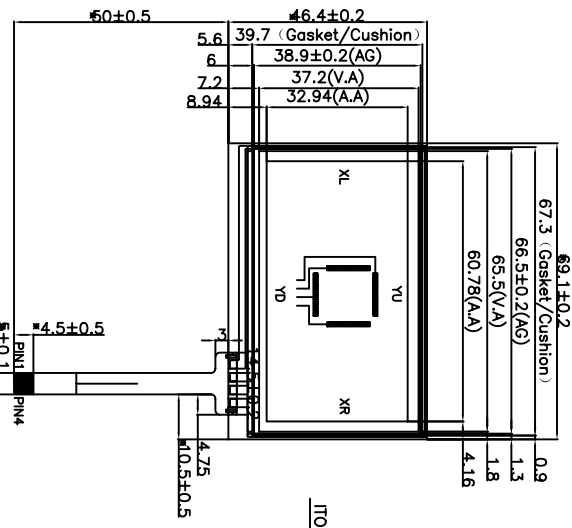


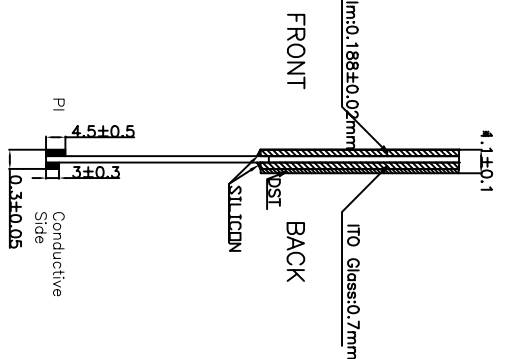
Structure and Area definition



Adhesive area
 The area which guarantees a touch panel operation without any deterioration when pressed. It is formed by the adhesion of the resin and the touch panel. (Open setting durability)
Response non-response area
 The area which guarantees a touch panel operation and its function when the area is touched. (Open setting durability)
Operation area
 The area which guarantees a touch panel operation and its function when the area is touched. It is formed by the adhesion of the resin and the touch panel. (Open setting durability)
Operation non-response area
 The area which guarantees a touch panel operation and its function when the area is touched. It is formed by the adhesion of the resin and the touch panel. (Open setting durability)
Operation non-response area
 The area which guarantees a touch panel operation and its function when the area is touched. It is formed by the adhesion of the resin and the touch panel. (Open setting durability)
Operation non-response area
 The area which guarantees a touch panel operation and its function when the area is touched. It is formed by the adhesion of the resin and the touch panel. (Open setting durability)

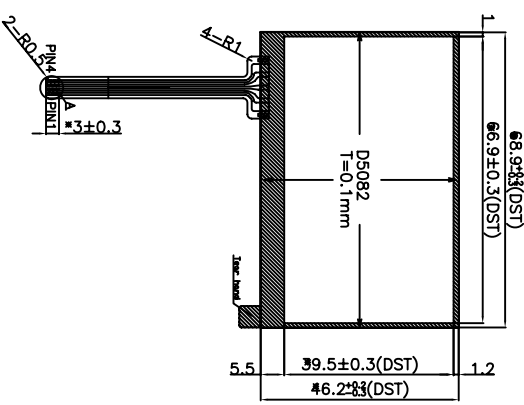


FRONT



FRONT

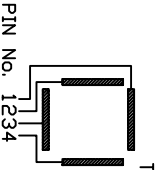
BACK



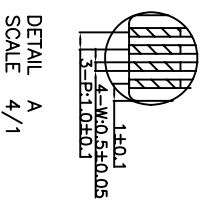
BACK

- Notes:
1. Type: Film to Glass
 2. Operating Voltage: ≤5V
 3. Operating Temperature: -20°C~70°C
Storage Temperature: -30°C~80°C
 4. Connect Material: FPC
 5. Response time: <10ms
 6. Hitting Life: ≥1,000,000 times;
Writing Life: ≥1,000,000 times
(1 cycle sliding is 2 time)
 7. Linearity: ≤1.5%
 8. Transmittance: ≥78%
 9. Surface Hardness: >3H (Pencil)
 10. Operation force: ≤120g
 11. Resistance:

(Anti-glare Hard & Mate anti-newton ring coating (ITO Film): 500~4500
 (Stand and ITO Glass): X: 4000~11500
 12. Unspecified Tolerance: ±0.20
 13. All materials in the drawing coincide with the RoHS&halogen free requirement



Pin No.	Description
1	YU
2	XL
3	YD
4	XR



0	FIRST ISSUE	1	2	3	4	5	6
REV.	SYMBOL DESCRIPTION	1	2	3	4	5	6
TITLE	TP	PART NO.	JAZZ-AT				
REV.	O	CUSTOMER NO.					
SCALE	FIT	UNIT	mm	3rd ANGLE	SHEET	1 of 1	
ROHS/REACH COMPLIANT	YES	CUSTOMER'S APPROVAL					
UNMARKED TOLERANCE	±0.2XX	APPROVAL					