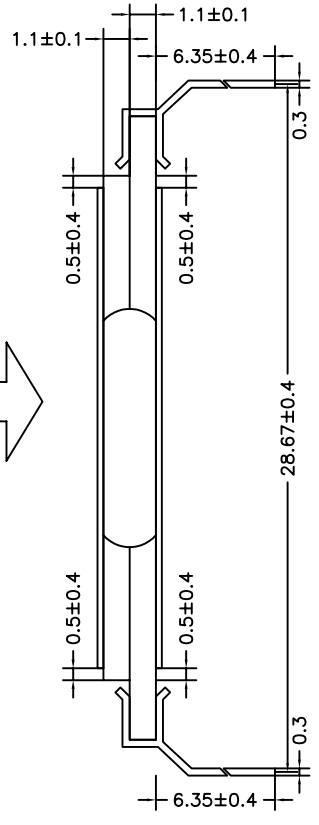
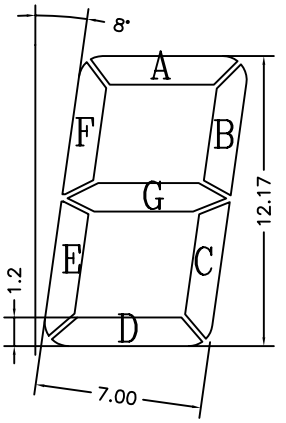


VIEWING FACE →



PIN NO.	1	2	3	4	5	6	7	8
SEGMENT	1BC	3F	3C	3E	3D	3C	3B	3A
PIN NO.	9	10	11	12	13	14	15	16
SEGMENT	2C	2B	2A	2F	2G	2E	2D	COM



NOTES:

- |  |                             |
|--|-----------------------------|
| 1. DISPLAY TYPE: TN                    | 5. OPERATING VOLTAGE: 5.0 V |
| 2. VIEWING DIRECTION: 6:00             | 6. OPERATING TEMP: -20~70°C |
| 3. POLARIZER MODE: POSITIVE/REFLECTIVE | 7. STORAGE TEMP: -30~80°C   |
| 4. DRIVER METHOD: STATIC               | 8. CONNECTOR: PIN           |