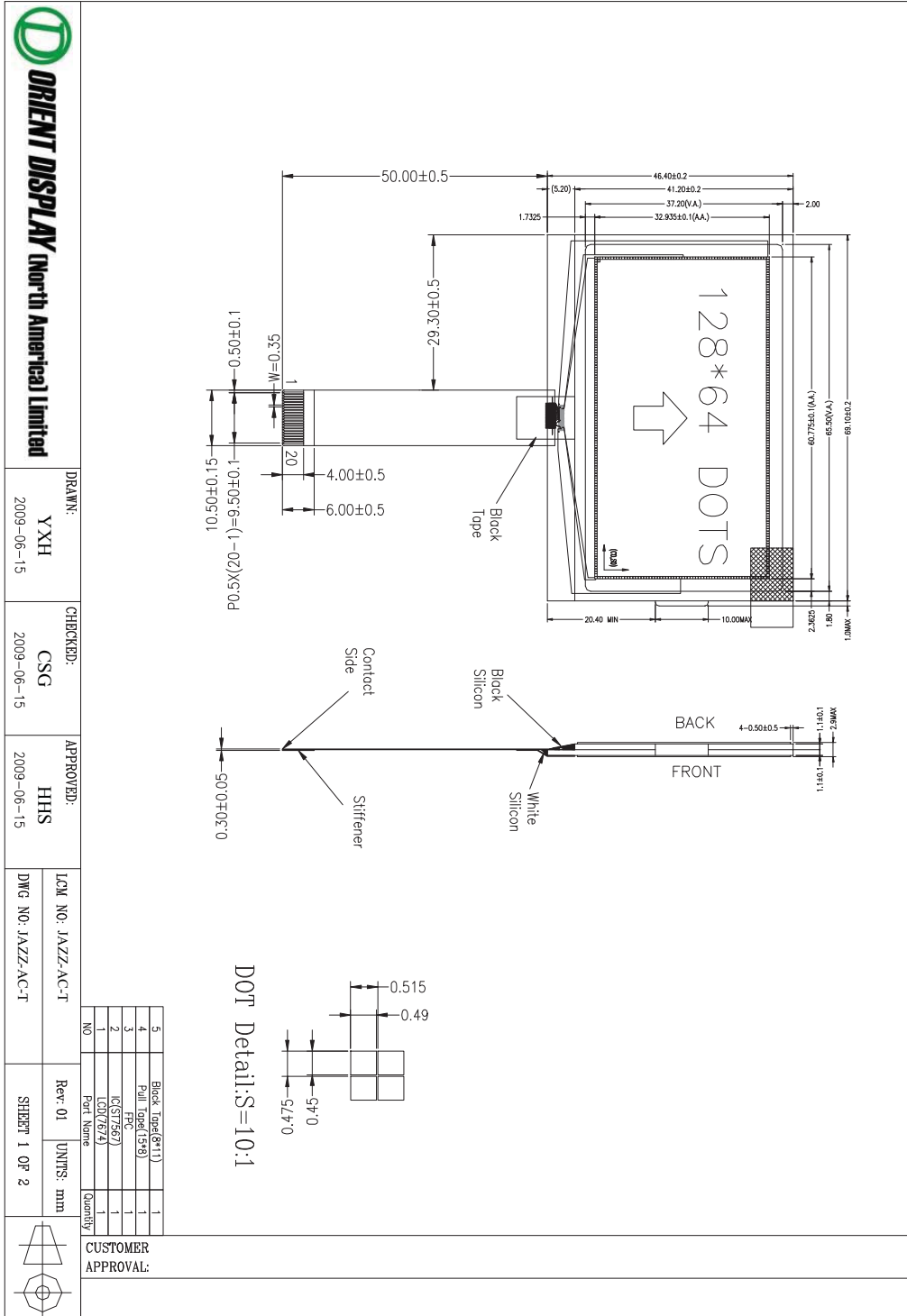
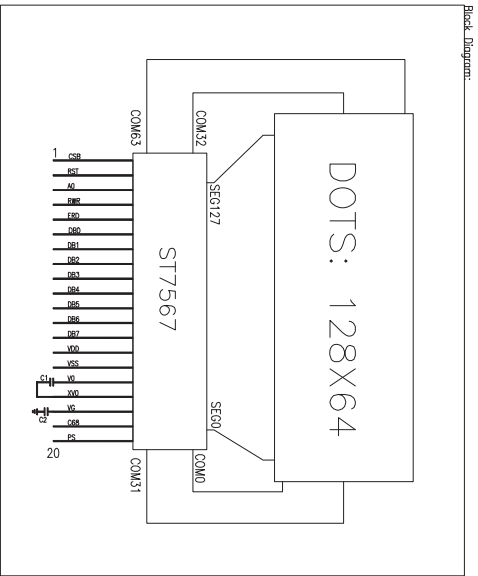


2 Mechanical Diagram





DISPLAY TYPE: **FSTN**, Transflective, **Negative** **B01**

VIEWING DIRECTION: 6:00

DRIVER IC: ST7567

LOGIC VOLTAGE: 3.2±0.1V

LCD DRIVE VOLTAGE(V_{lcd}): 9V

DRIVING METHOD: 1/65 DUTY, 1/9 BIAS

OPERATING TEMPRATURE: -20° ~ +70°C

STORAGE TEMPRATURE: -30° ~ +80°C

INTERFACE CONNECTOR: FPC

All UNMARKED TOLERANCE: ±0.3mm

Pin Description:

Pin	Symbol	Function Description
1	CSB	Chip select input pin
2	RST	Reset input pin
3	A0	Register select pin
4	RWR	Read/Write execution control pin
5	ERD	Read/Write execution control pin
6	DB0	8-bit parallel interface
7	DB1	8-bit parallel interface
8	DB2	8-bit parallel interface
9	DB3	8-bit parallel interface
10	DB4	8-bit parallel interface
11	DB5	8-bit parallel interface
12	DB6	8-bit parallel interface(SCL)
13	DB7	8-bit parallel interface(SDA)
14	VDD	Power supply
15	VSS	Ground
16	V0	Connect 1uF cap to the X0 PIN
17	XV0	Connect 1uF cap to the V0 PIN
18	VG	LCD driving voltage for segment circuits
19	C68	Parallel interface mode(6800=1,8080=0)
20	PS	PSB selects the interface type

B01

B01:Modify display mode.
B02:Modify display mode.
A00: Original Edition
Revision History:

CUSTOMER APPROVAL:



ORIENT DISPLAY North America Limited

DRAWN: YXH
2009-06-15

CHECKED: CSG
2009-06-15

APPROVED: HHS
2009-06-15

LCM NO: JAZZ-A-C-T
DWG NO: JAZZ-A-C-T

Rev: 01 UNITS: mm
SHEET 2 OF 2

