

AF

Y

240320

A0:

2.8:

N

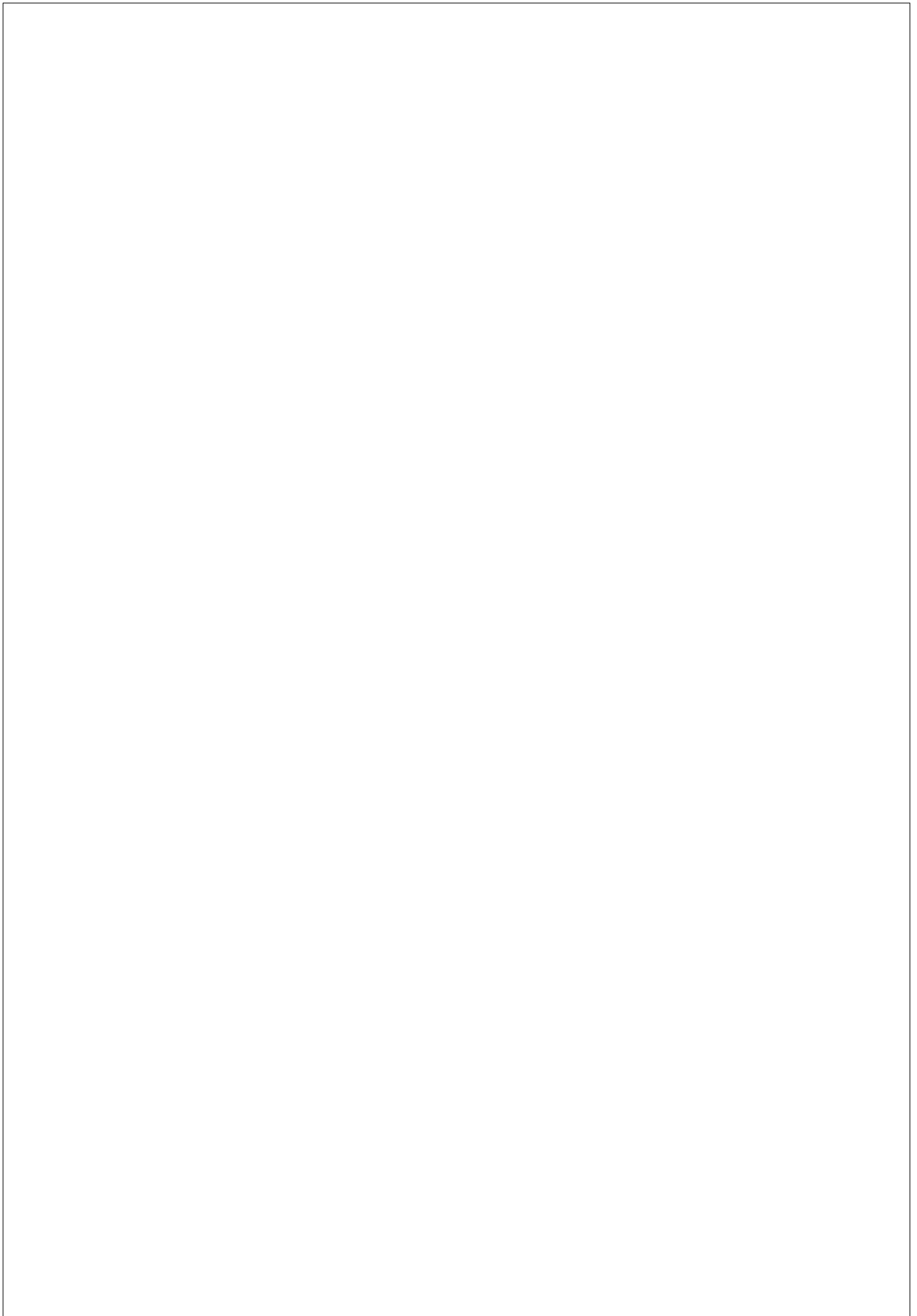
6:

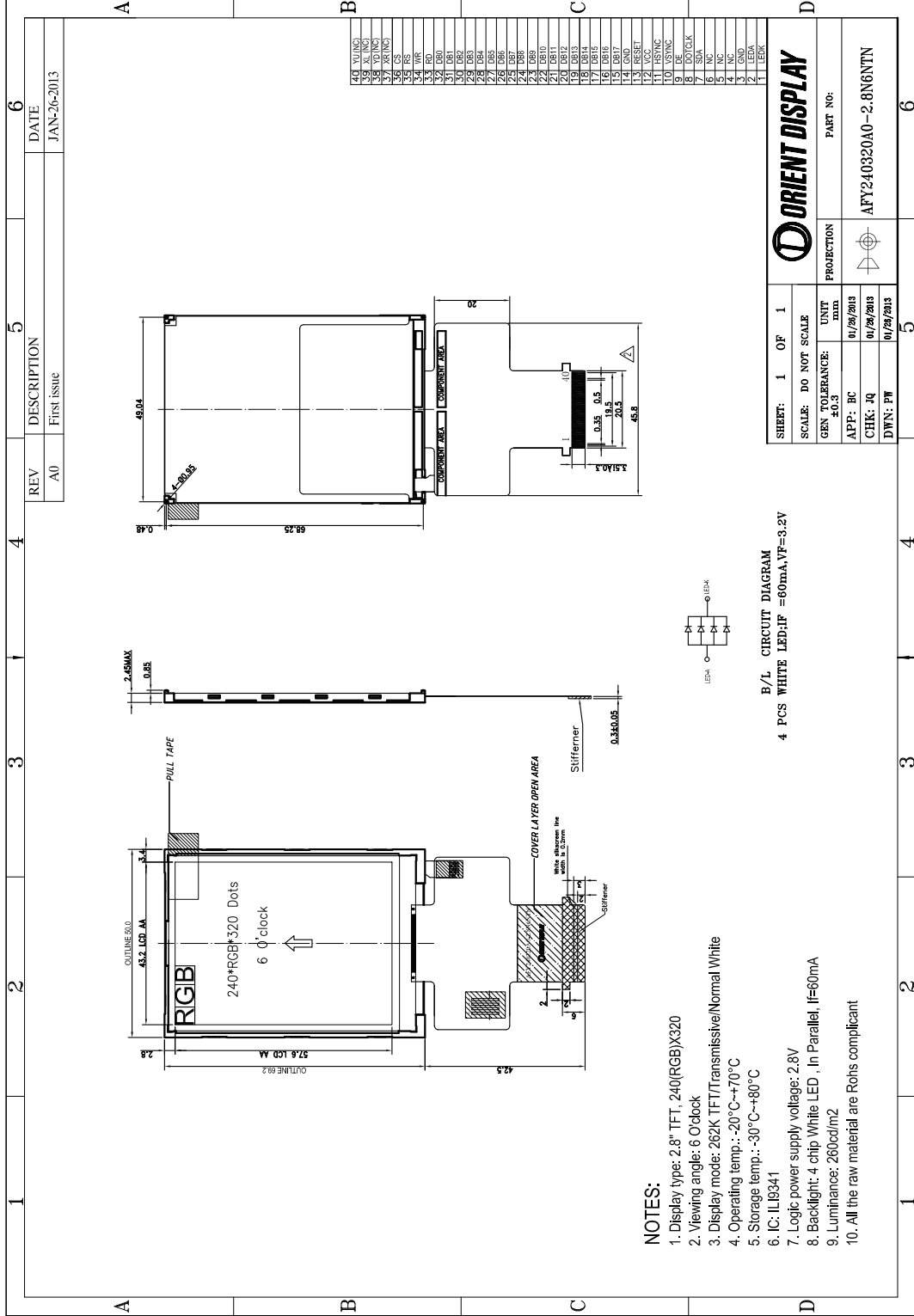
N:

T:

N:

R:



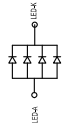


**NOTES:**

1. Display type: 2.8" TFT, 240(RGB)X320
2. Viewing angle: 6 O'clock
3. Display mode: 262K TFT/Transmissive/Normal White
4. Operating temp.: -20°C--+70°C
5. Storage temp.: -30°C--+80°C
6. IC: ILI6341
7. Logic power supply voltage: 2.8V
8. Backlight: 4 chip White LED , In Parallel, I=60mA
9. Luminance: 260cd/m2
10. All the raw material are Rohs compliant

**B/L CIRCUIT DIAGRAM**

4 PCS WHITE LED, I<sub>F</sub> =60mA, V<sub>F</sub> =3.2V

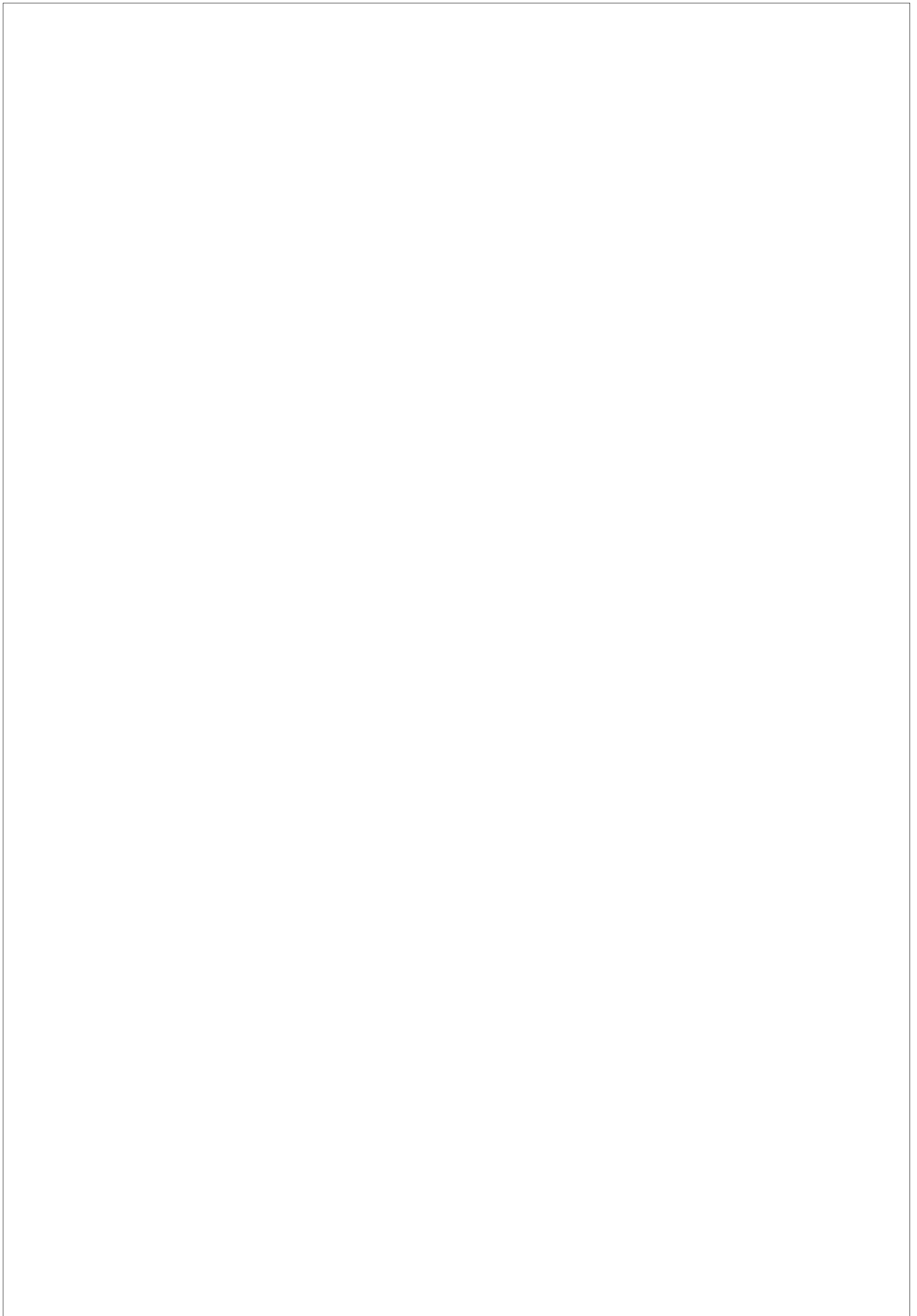


**ORIENT DISPLAY**

SHEET: 1 OF 1  
 SCALE: DO NOT SCALE  
 GEN TOLERANCE: ±0.3  
 APP: BC 01/28/2013  
 CHK: JQ 01/28/2013  
 DWN: PW 01/28/2013

PROJECTION:

PART NO: AFY240320A0-2.8N6NTN



Doc.No.: AFY240320A0-2.8N6NTN	
REV : A0	PAGE : 8/21
EFFECTIVE DATE : 2013-03-26	

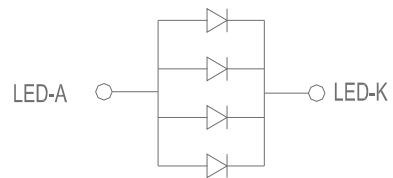
Note: 2: Default interface of this part is •80 MCU 16-bit bus interface IŽ ([IM3:IM0] =0001), and •HSŽ, •VSŽ, •DEŽ, •DCLKŽ, •SDAŽ, •DB16Ž, •DB17Ž, already are connected to GND via 0 ohm resistor on FPC. Refer to below circuit.

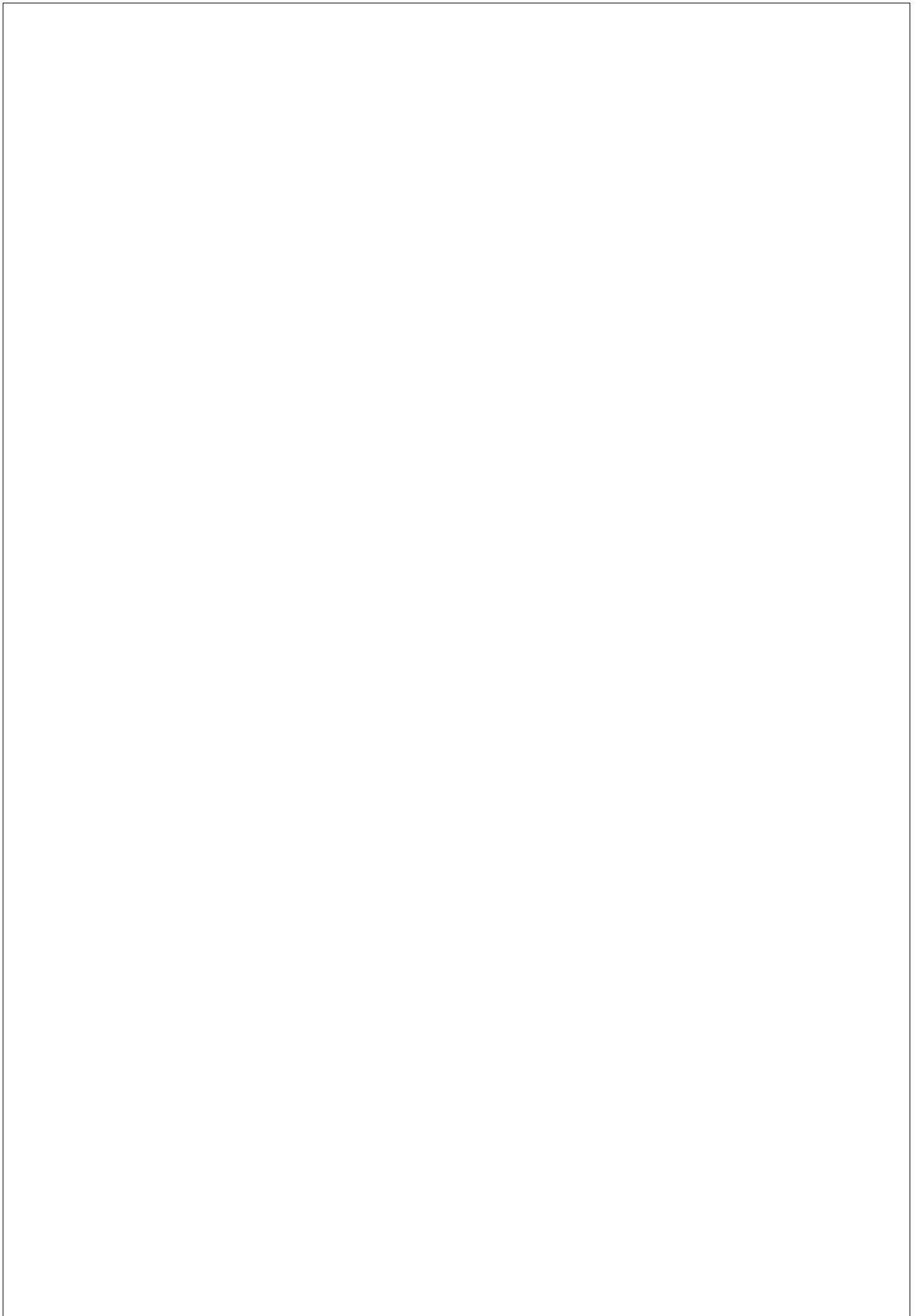


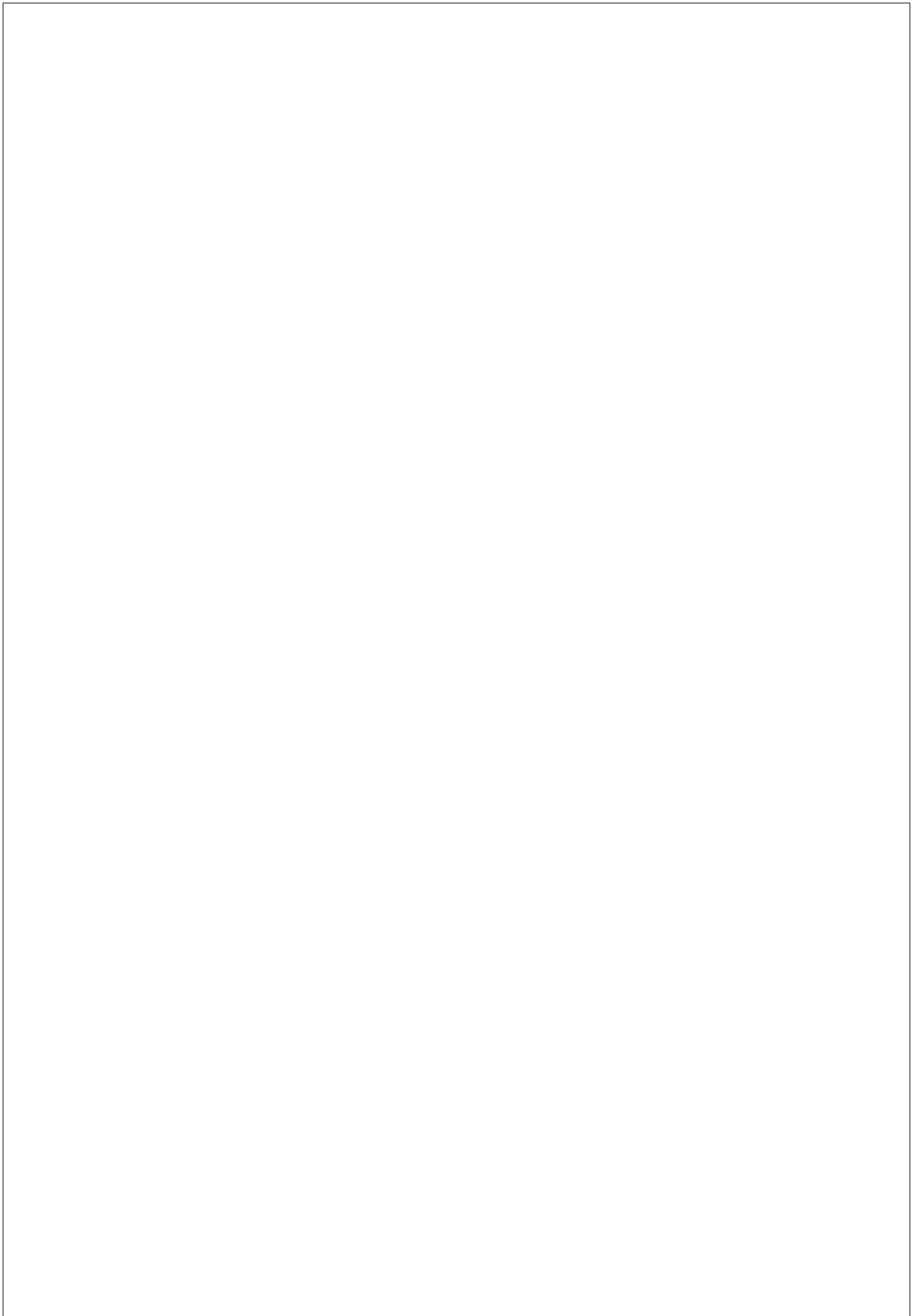
Item	Symbol	Values		Unit	Remark
		Min	Max		

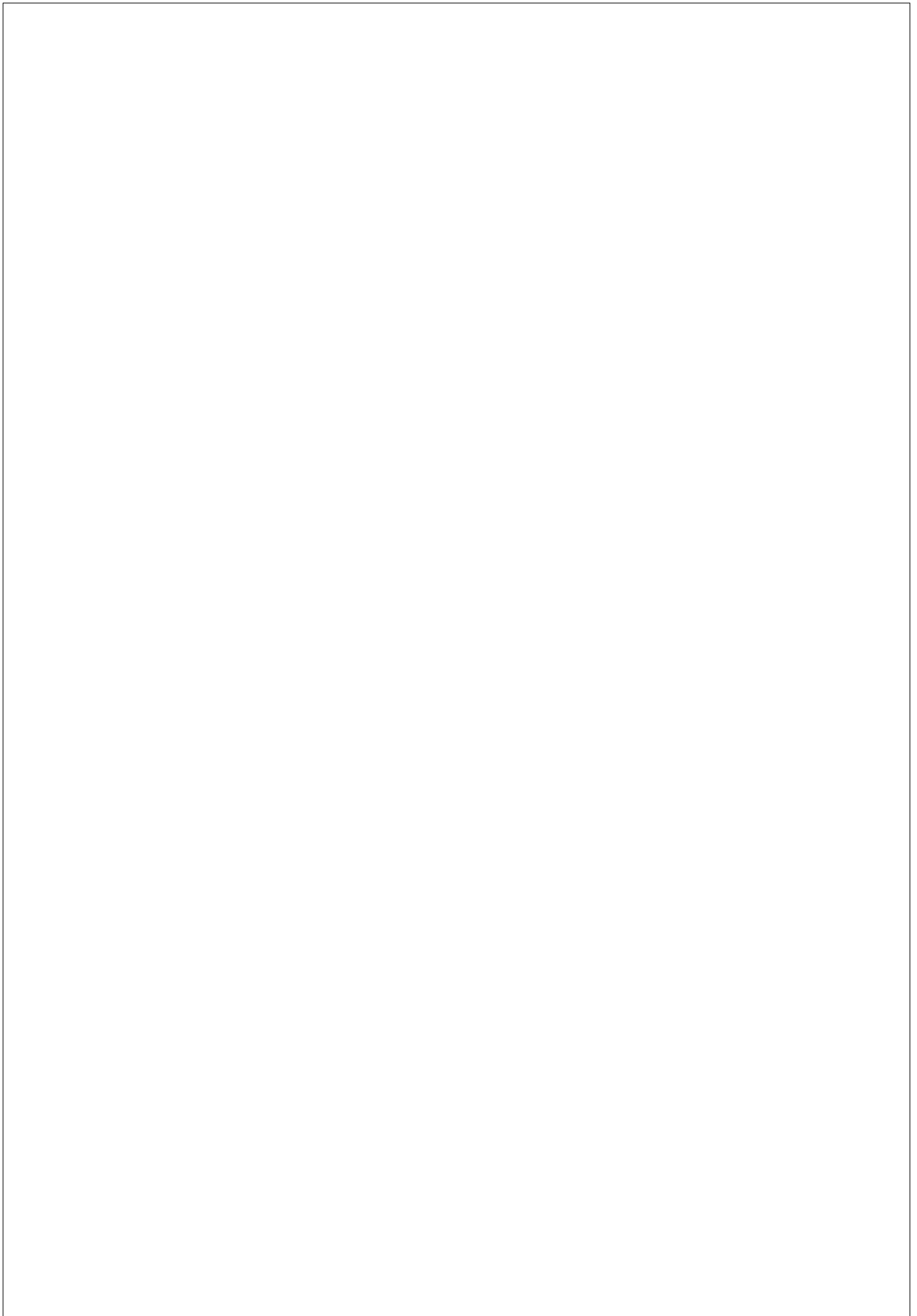
Item	Symbol	Values			Unit	Conditions
		Min	Typ	Max		

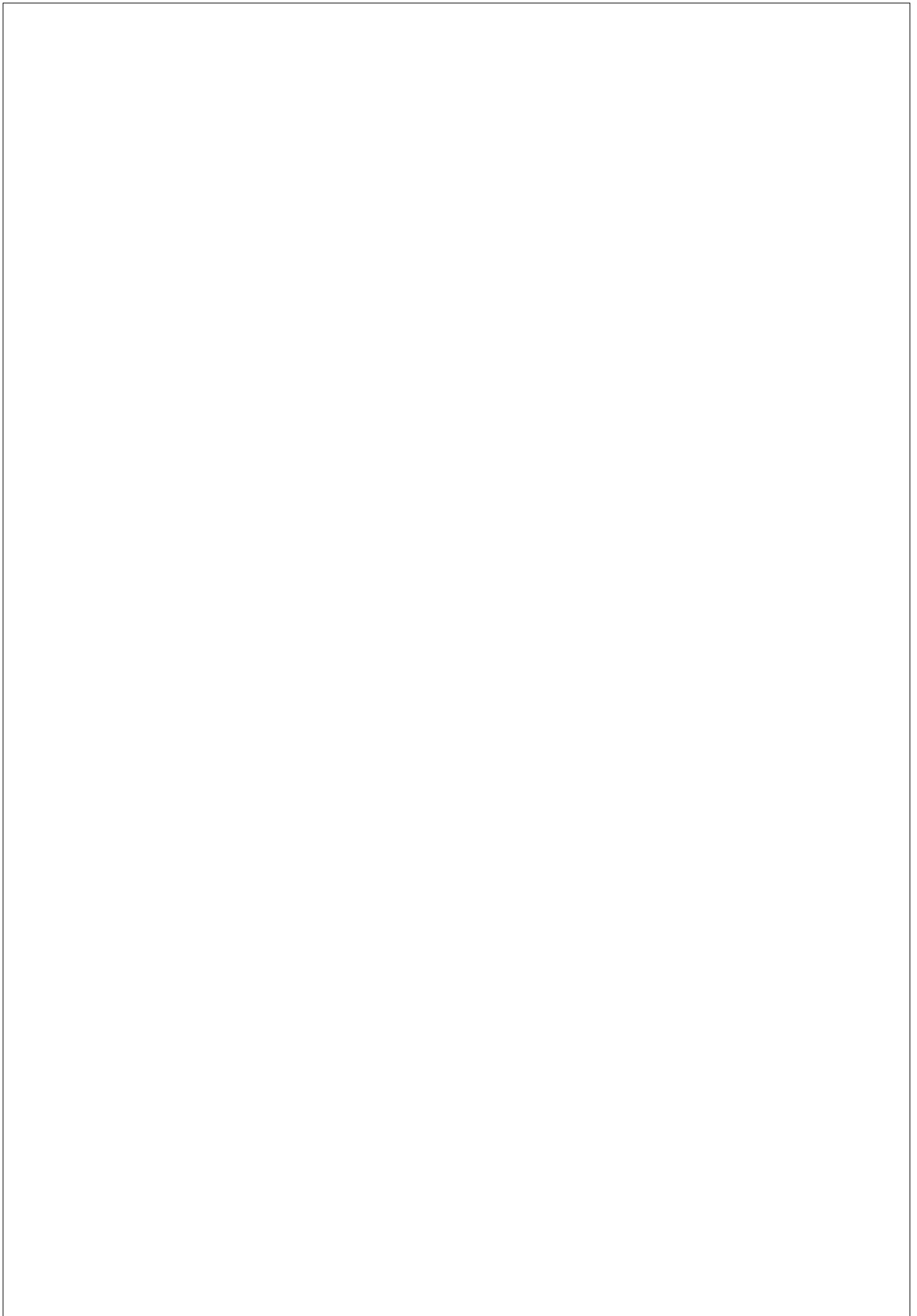
Item	Symbol	Min	Typ	Max	Unit	Remark
------	--------	-----	-----	-----	------	--------

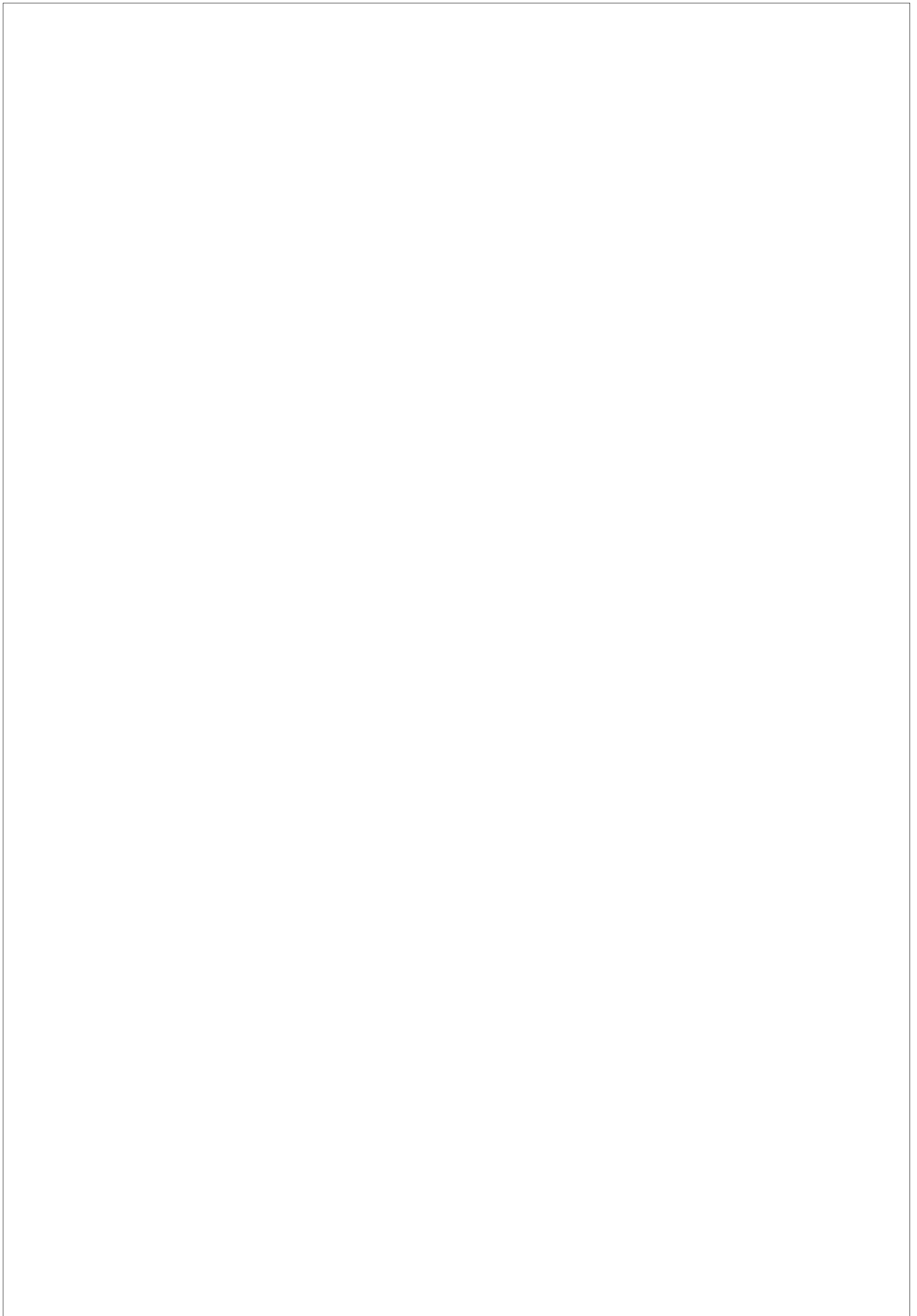


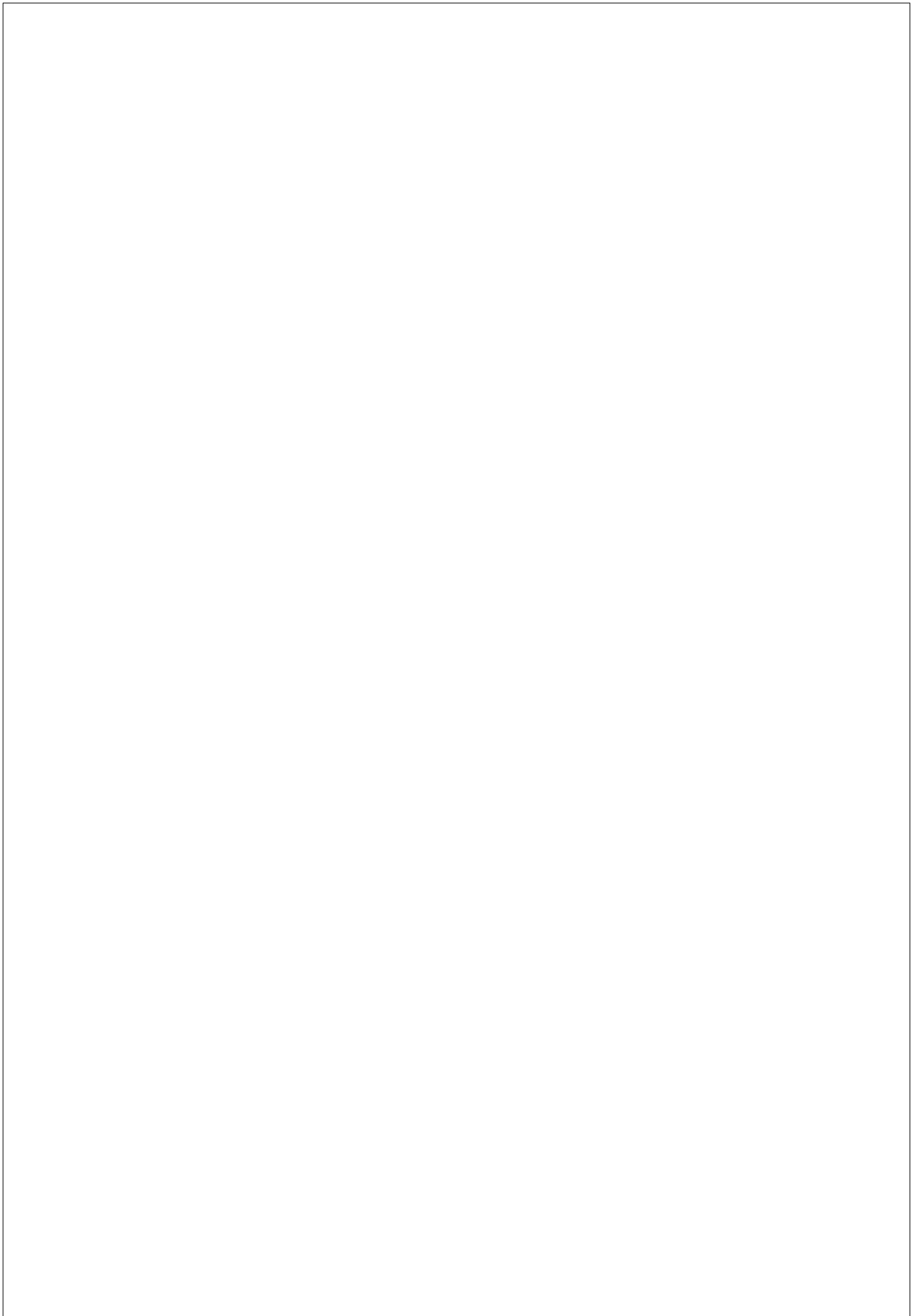














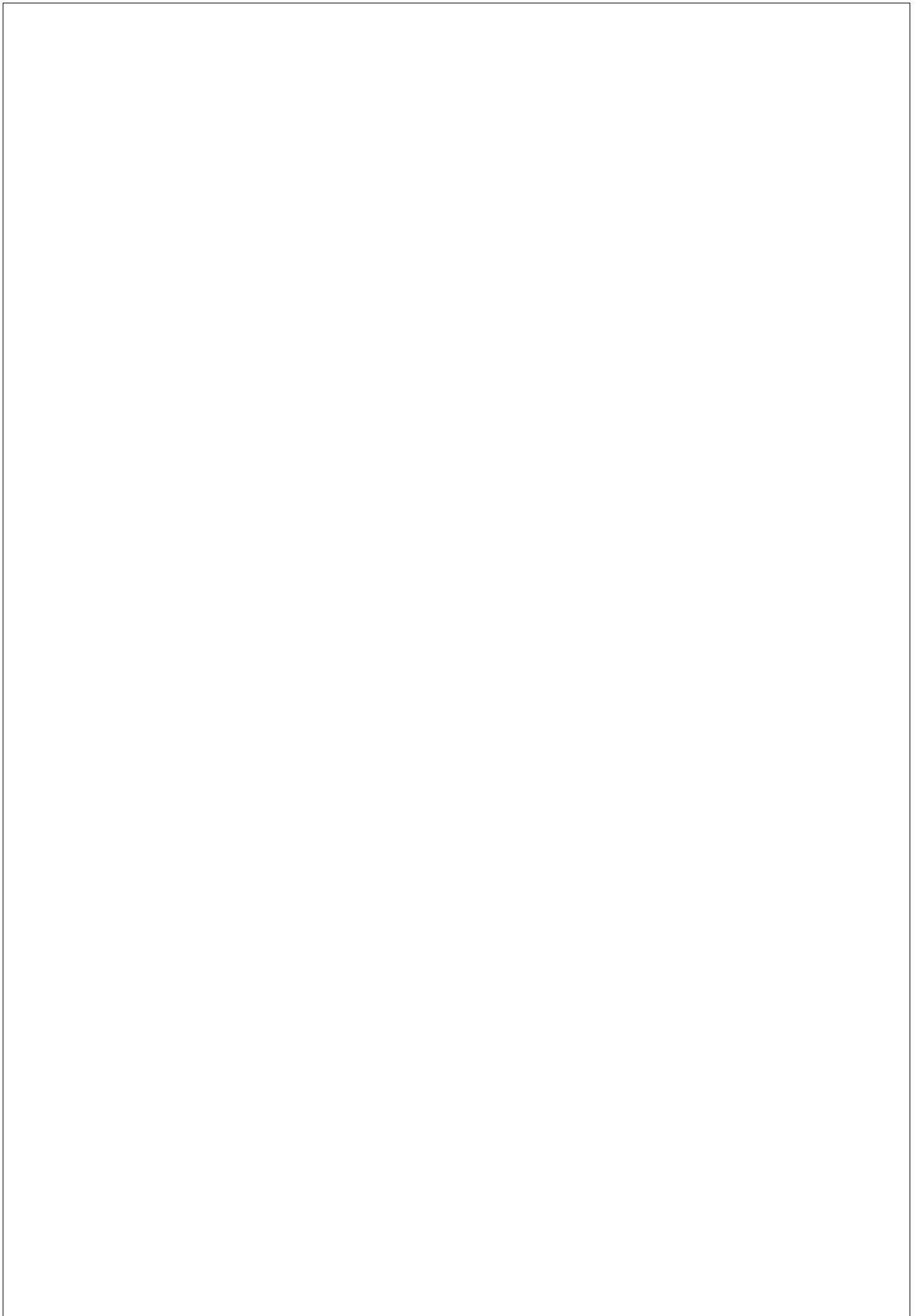


60

60

60

50



<http://www.orientdisplay.com/Reliability.html>

<http://www.orientdisplay.com/Delivery-TFT.html>

<http://www.orientdisplay.com/General-Precautions.html>

<http://www.orientdisplay.com/Warranty.html>

